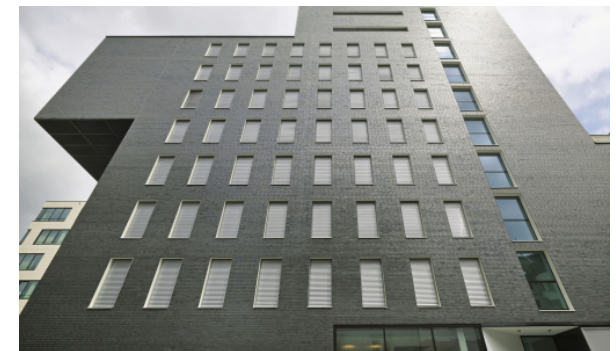
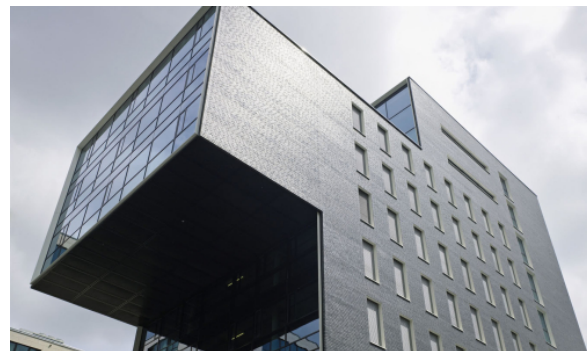


# Schwedler Tower

Frankfurt am Main, 2006 - 2008

The Schwedler tower is located in close proximity to Frankfurt's eastern harbour. The building's facade steps back and forth in three different segments: the five lowest floors are set back from the street, creating a small entrance plaza; this is overhung by a three storey cantilevered section with two more floors set back behind the base. The cantilever evokes images of the harbour and cranes. A retail show room will be situated on the ground and first floors, whereas floors two to seven offer flexible office space. Floors five, six and seven have an atrium with a lift leading to the roof terrace. The restaurant will be situated on floors eight and nine, the ninth floor being accessible via a mezzanine and a freestanding staircase. Both levels have direct access to the extensive roof terrace with great views of the city.



# Schwedler Tower

Frankfurt am Main, 2006 - 2008

????:

??/??? : LHI Manura GmbH & Co. KG, Munich

??? : 5,961 m<sup>2</sup>

Baumanagement: schneider+schumacher Bau- und  
Projektmanagement GmbH

?????? : 1-5

