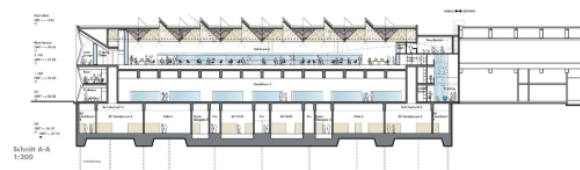


DFS Munich

Munich, 2009
Office/administration buildings

In the competition for the air traffic control center in Munich the creation of optimal working conditions was paramount for schneider+schumacher, aiming to support the staff in their highly demanding and responsible jobs. Clear internal access and well-organised spatial arrangements implement high quality architecture.



DFS Munich

Munich, 2009

Office/administration buildings

Technical details:

Typology: Office/administration buildings

Procurement documentation: Competition

Service phases (HOAI): 1