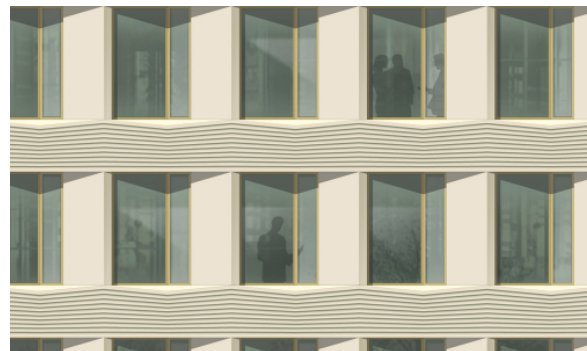


# Apollo 2010

Leipzig, 2010

schneider+schumacher's design for a new office and commercial building on Martin Luther Ring in Leipzig has been awarded first prize. Finally, after 58 years, this empty plot in a corner of central Leipzig is now going to be developed. Apollo 2010 is designed as an eight-storey structure, where the top three storeys - in contrast to the storeys below - terminate the building in a wave-like fashion. The design is intended to signify bridging the gap between the present and the future. The materials used, together with the gently alternating recessed and projecting elevation, produce a lively play of light and shadow. This is carefully balanced against the building's self-assured presence, which complements the late 19th century block in a natural and calm manner, and is further helped by the gently curving set backs at roof level that form a harmonious link to the surrounding roof gables.



# Apollo 2010

Leipzig, 2010

????:

?????: 1