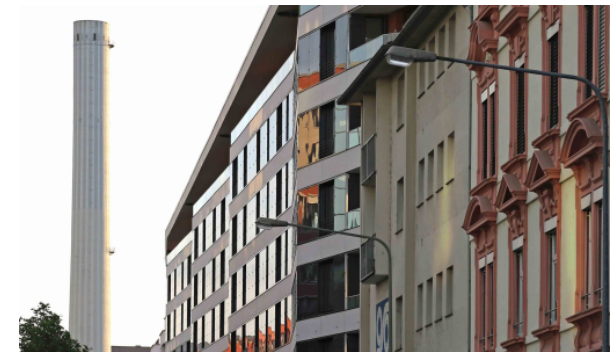


Aktivstadthaus

Frankfurt am Main, 2013 - 2015
ssss, ssss

Europe's largest Aktiv-Stadthaus is located on southern edge of Frankfurt's Gallus district, near the West Harbour. Photovoltaic elements on the roof and the façade of the building produce more energy than its occupants consume in terms of heating and domestic electricity. Its proximity to the River Main ruled out the use of geothermal energy and instead, the building employs heat recovered from the water drainage system. Surplus energy can be used for other purposes, such as running electric vehicles. The eight-storey residential block is 150 metres long but only 10 metres deep and offers 74 apartments for rent plus 2 commercial units. The Aktiv-Stadthaus was designed by Kassel-based HHS Planer + Architekten AG. schneider+schumacher's building and project management team supervised on-site construction.



Aktivstadthaus

Frankfurt am Main, 2013 - 2015

🏠, 🏠

🏠:

🏠: 🏠, 🏠

🏠: 6-9

🏠/🏠: ABG FRANKFURT HOLDING

Wohnungsbau- und Beteiligungsgesellschaft mbH,
Frankfurt am Main

Baumanagement: schneider+schumacher Bau- und
Projektmanagement GmbH

🏠: 11.688 m²

🏠: 9.826 m²

Brutto Rauminhalt: 38.070 m³

